

PROTECTOR ALPIN

Art. No. 602301



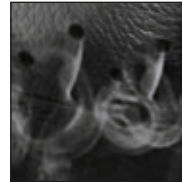
CE EN ISO 20345:2011 S2 HRO HI CI WR SRA

Leather thickness 2.8 – 3.0 mm, waterproof and breathable with GORE-TEX® Performance, cut protection level 3, leg height 20 cm, antistatic, sole 015

Available sizes UK 6 – 12



602301



HAIX® Climate System



HAIX® 2-Zone Lacing



Rubber toe and heel protection



Double tongue for excellent pressure distribution and adjustment



Upper Material

Suede, hydrophobic, breathable, 2.8 – 3.0 mm thick

Cut Protection

Protection against cuts certified with cut level 3 (28m/sec.). Compliant with EN ISO 20345:2011.

Inner lining

GORE-TEX® Performance; 4-layer GORE-TEX® laminate, waterproof and breathable. Highly abrasion-resistant lining with fleece midlayer. Optimized- climate comfort for all year seasons and excessive use. Increased chemical protection.

Plastic Insole

Dimensionally stable, torsion-proof, avoids punctual pressure (e.g. of stones).

Foot bed

Anatomically formed, exchangeable, washable, very good moisture absorption, dries quickly.

Protective Toe Cap

Anatomically formed and well-padded protective toe cap.

Sole

Stable rubber/PU sole with a robust terrain tread, wear resistant and non-slip traction. The low-weight PU, impact-absorbing wedge in the heel area cushions every step and affords good bending comfort. The manually-applied rubber sidewall gives this sole optimal side stability. Oil, heat and gasoline resistance and non-marking characteristics. Compliant with DIN EN ISO 20345:2011.

HAIX® Climate System

The HAIX Climate system uses the pumping movement, which permits air circulation with every step – warm air is released and fresh air comes in through the vent holes at the top of the boot.

HAIX® Forest Grip System

Extremely slip resistant profiled rubber sole. Optimal performance in water, ice, and snow.

Others

Closed lacing system with eyelets permitting smooth movement, 2-zone lacing through clamp ring, no side seams, sole with side stability, Adjustable tongue - double tongue for excellent pressure distribution and adjustment. Tongue can be adjusted via a Velcro fastener at the bottom and top of the tongue. Inlay in the instep/ tongue pouch area

UK	3	3½	4	4½	5	5½	6	6½	7	7½	8	8½	9	9½	10	10½	11	11½	12	12½	13	13½	14	14½	15
EU	35	36	37	37	38	39	39	40	41	41	42	43	43	44	45	45	46	47	47	48	48	49	50	50	51
US	4	4½	5	5½	6	6½	7	7½	8	8½	9	9½	10	10½	11	11½	12	12½	13	13½	14	14½	15	15½	16

HAIX®-Schuhe, Produktions- und Vertriebs GmbH

Auhofstrasse 10, 84048 Mainburg, Germany
T. +49(0)8751/8625-0, F. +49(0)8751/8625-25
info@haix.de, www.haix.com